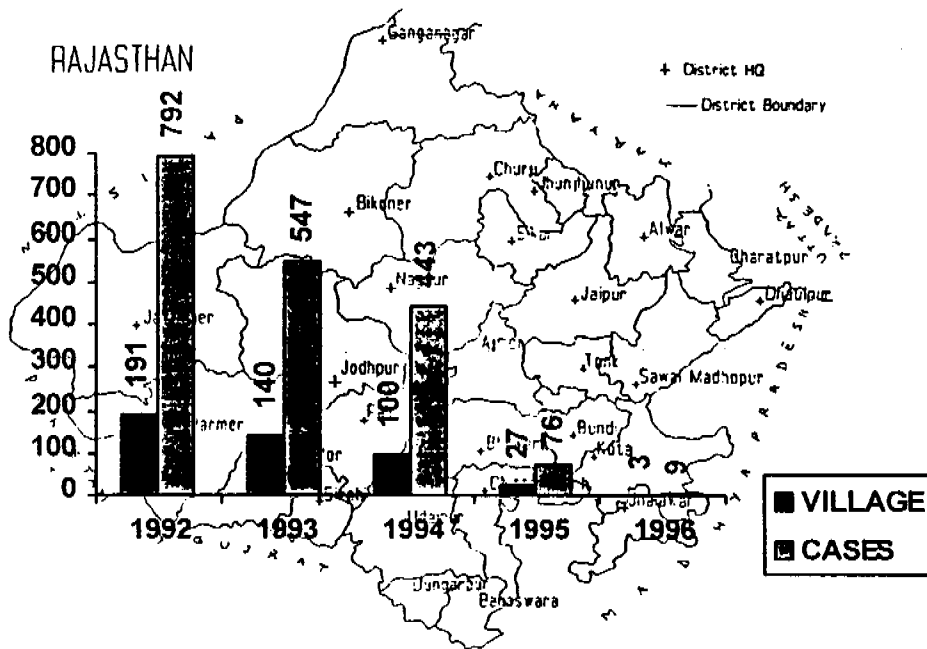


RAJASTHAN INTEGRATED GUINEAWORM ERADICATION PROJECT



राइजेप
RIGEP

CONTAINMENT STRATEGY FROM 1992-1996



F-101, PUNCHSHEEL MARG, C-SCHEME, JAIPUR - 302 005

HELP ERADICATE GUINEAWORM DISEASE

Compiled and Edited by :

- ◆ Mr. Zamin Husain
Additional Director

- ◆ Mr. R. C. Dholiyan
Media & Communication Officer

- ◆ Mr. R. K. Lodha
Junior Engineer

Rajasthan Integrated Guineaworm Eradication Project
F-101, Panchsheel Marg, C-Scheme, Jaipur - 302 005

INDEX

1. Introduction & Creation of RIGEP	1
2. Case Containment strategy for 1992-1996	2
3. Comparative Statement showing GW active case villages and cases (1992-1996)	3
4. Month wise GW incidence in 1996	3
5. Sex and Age wise GW cases in 1996	3
6. Implementation of Project activities in 1996	3
7. Remedial measures undertaken in 1997	3
8. Guineaworm situation in 1995 & 1996	4
9. Material and Financial support by UNICEF	5
10. Provision of drinking water supply	6-7
11. Map of Rajasthan showing GW situation as on 1.1.97	8
12. Annual work Plan for 1996	9
13. Annual work Plan for 1997	10-11
14. List of GW case in 1996	12
15. Weekly incidence 1995 & 1996	13
16. District, PHC & Villages GW situation for 1992-96	14-15
17. Index case Analysis of GW incidence based on 1995	16
18. List of Nadies (Ponds) identified active case villages in 1995 & 96	17-20
19. Bar diagram showing GW incidence for 1984-96	21
20. Bar diagram of GW active case villages & cases (1992-96)	22
21. Graph showing weekly GW incidence in 1996	23
22. Bar diagram showing Sex & Age wise GW cases in 1996	24
23. Format weekly Postcard	25-26
24. RIGEP in Photographs	27-32

LIBRARY IRC

PO Box 93190, 2509 AD THE HAGUE

Tel.: +31 70 30 689 80

Fax: +31 70 35 899 84

BARCODE:

LO:

15697
822 INRA98

COMPREHENSIVE NOTE ON RAJASTHAN INTEGRATED GUINEAWORM ERADICATION PROJECT (RIGEP)

INTRODUCTION

Rajasthan is the second largest State which occupies 10% of country's area. Most of the area is occupied by the Great Indian Thar Desert where population is scattered in pockets. The approach to these pockets are very difficult due to difficult terrain and extreme adverse Geographical conditions.

Rajasthan has been one of the highly Guineaworm endemic State specially in western desert District and Tribal Districts in South East Region. Due to scarcity of potable water in desert area, the rural population has to depend on rain water collection in open community ponds known as Nadies and from them transporting to individual storage upto its last drop. These open ponds are the main source of transmission of Guineaworm disease from man to man and even pond to pond. Similarly, the large number of step wells were responsible for disease transmission of Guineaworm disease in South East tribal area.

The earlier efforts made to eradicate Guineaworm disease became failure due to scattered population and difficult terrain. The rural community was not aware about the causation of disease and its prevention.

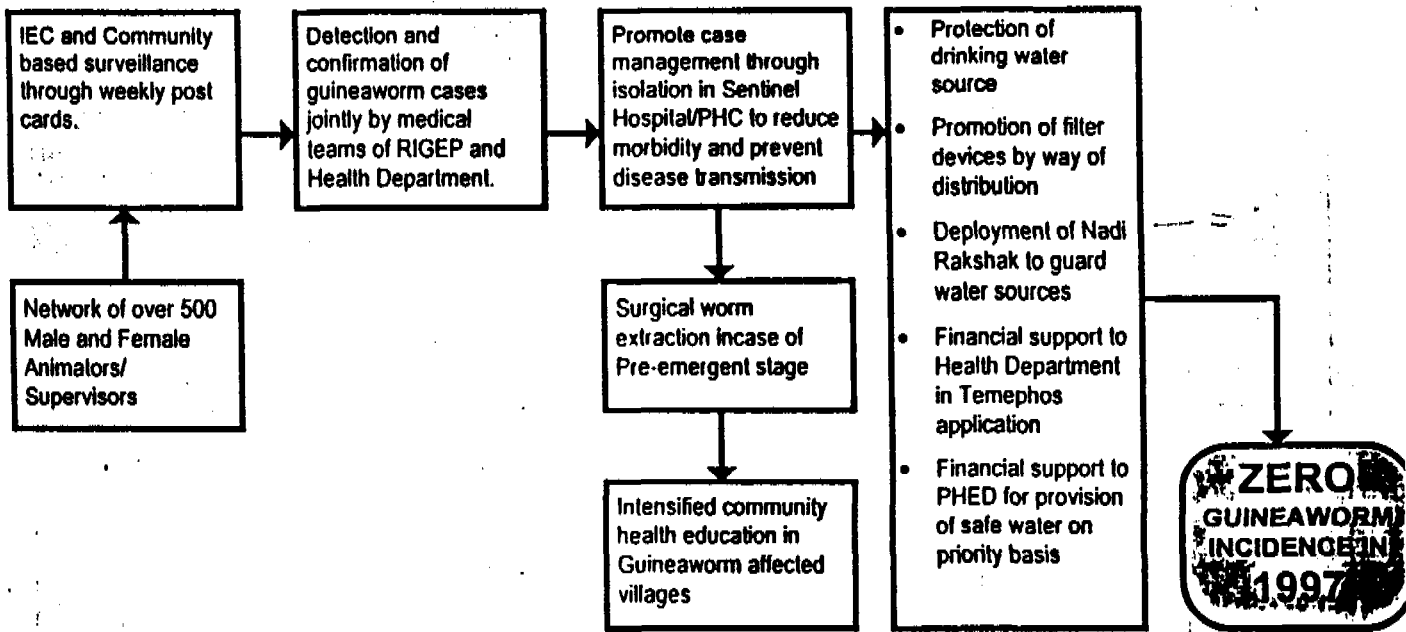
The State of Rajasthan has been fighting against this disease by launching a special project known as RIGEP with the following major components.

1. Community Health Education
2. Detection, Isolation and treatment of Guineaworm patients.
3. Providing potable water to the population residing in Guineaworm affected villages on priority basis.

After successful achievement of SWACH in eradicating GW disease from tribal districts, the RIGEP was conceived in 1992 with the financial support of Government of India, Government of Rajasthan and UNICEF for remaining guineaworm affected districts which included four primary districts i.e. Jhalawar, Jodhpur, Nagaur, Barmer and five secondary districts i.e. Bikaner, Jaisalmer, Jalore, Kota and Chittorgarh. The main activities of Guineaworm eradication are implemented through various line departments viz. Medical & Health, PHED, RDD, District Administration and two special UNICEF assisted projects of SWACH and RIGEP.

There is a State level coordination committee of directions (COD) duly constituted by the State Government which consists of DHS, CE(R) PHED, Director RDD & PR, UNICEF and senior officers from line departments under the chairmanship of Principal Secretaries PHED/Health. The programme activities and other intervention measures are reviewed at the State level periodically. The IEC cell of RIGEP attached to PHED is responsible for project management and monitoring of intervention measures at the State level where as Project Officers coordinate the field activities in the districts. The project has adopted the similar strategy and modus operandi of surveillance, case management, community health education and water supply intervention etc. in order to achieve zero Guineaworm incidence in 1997.

CASE CONTAINMENT STRATEGY



- ⇒ The project has a very strong network of animators and supervisors (Male & Female) spread over in each Guineaworm affected village/Dhanie. They are like social workers who work as link person between villagers and project. They are selected from community and are imparted training from time to time. They are mainly responsible for detection of GW cases preferably in pre-emergent stage, promptly reporting to Project Officer as well as to PHC Medical Officer through weekly post card or even by personal visit. He/She motivates the GW patients for isolation and treatment, promotes various filter devices like FF, CCF, Water bottle, Filter straw etc. and impart community health education. They are given honorarium @ Rs. 200/- per month.
- ⇒ The animators and supervisors also record other information about break down of water source, rain fall, temephos application etc. in the printed format of post card. In order to sort out post cards immediately, post cards have different colours for each week.
- ⇒ It is significant to mention that all the nine reported GW cases in 1996 have been detected in pre-emergent stage. After verification of these cases by medical department, the surgical extraction was done under aseptic techniques and the patients were discharged only after 10-12 days or till their wounds are completely healed up. One GW case Sh Bhanwara Ram, ofcourse created some problem when he suddenly left the hospital against medical advice. After 3-4 days, he could be traced out in cooperation of district administration. Eventually the patient was again isolated and his worm was completely extracted. His movement history was taken and unsafe water sources of the places where he visited during that absence period were promptly got treated with temephos.
- ⇒ The Nadi Rakshaks are deployed on each Nadi if active case village round the clock for preventing GW patients to enter into water source. They help the community in sieving water through funnel filter and to the medical team in temephos application.
- ⇒ Simultaneously a two day's village intensive drive (VID) is organised for creating awareness in the community about various aspects of GW disease and its prevention. The VID teams visit each house hold for detection of each suspected GW case, ensure availability and regular use of funnel filter, disseminate

Comparative Statement showing GW Active case villages and cases (1992-1996)

Endemic Districts	Active GW case villages during the year						GW cases detected during the year					
	1992	1993	1994	1995	1996	% declined	1992	1993	1994	1995	1996	% declined
RIGEP												
Jodhpur	20	62	34	13	3	85	283	333	190	36	9	97
Nagaur	36	49	40	10	0	100	237	141	146	28	0	100
Jhalawar	34	3	0	0	0	100	55	3	0	0	0	100
Bikaner	4	9	13	4	0	100	14	30	85	12	0	100
Barmer	1	8	6	0	0	100	2	24	13	0	0	100
Jaisalmer	3	2	4	0	0	100	4	4	6	0	0	100
Kota	1	0	0	0	0	100	2	0	0	0	0	100
Jalore	1	1	0	0	0	100	1	3	0	0	0	100
Chittorgarh	1	0	0	0	0	100	1	0	0	0	0	100
Total	101	134	97	27	3	97	599	538	440	76	9	98.5
SWACH												
Banswara	2	0	0	0	0	100	2	0	0	0	0	100
Dungarpur	46	2	0	0	0	100	119	5	0	0	0	100
Udaipur	42	4	3	0	0	100	71	4	3	0	0	100
Total	90	6	3	0	0	100	192	9	3	0	0	100
Grand Total	191	140	100	27	3	98.5	792	547	443	76	9	98.5

Monthwise GW Incidence in 1996

District	PHC	Villages	Jan	Feb	Mar	Apr	May	Jun	Jul	Aug	Sep	Oct	Nov	Dec	Total
Jodhpur	Peelwa	Chainpura	0	0	0	2	3	0	1	0	0	0	0	0	6
	(Phalodi)	Amla	0	0	0	0	1	0	0	0	0	0	0	0	1
		Aau	0	0	0	0	0	0	2	0	0	0	0	0	2
Total			0	0	0	2	4	0	3	0	0	0	0	0	9

Sex and Age wise GW cases in 1996

Age Group	Male	Female	Total
0-14	1	1	2 (22.22%)
15-29	3	1	4 (44.44%)
30-44	1	0	1 (11.11%)
45-59	0	0	0 (0%)
60-above	1	1	2 (22.22%)
Total	6 (66.66%)	3 (33.33%)	9 (100%)

IMPLEMENTATION OF PROJECT ACTIVITIES IN 1996

- * Based on index case analysis of GW incidence in 1995, the field functionaries were made vigilant to search for Guineaworm suspected cases during the probable period of GW occurrence particularly where post emergent cases were found. It has resulted in detection of all nine guineaworm cases in pre emergent stage. All of them were isolated in sentinel hospital Osian till complete healing of their wound.
- * These nine cases are from three villages- Chainpura, Aau and Amla of Tehsil Phalodi (Jodhpur). Six cases had single worm where as three cases showed multiple worms. Thus 14 worms have been safely extracted before blister formation.
- * Out of these nine cases, two are children and seven are adult. As far as sex ratio is concerned, 6 cases are male and 3 are female.

IN ORDER TO PREVENT FURTHER TRANSMISSION IN 1997, THE FOLLOWING REMEDIAL MEASURES WERE UNDERTAKEN.

- * Regular house to house visit was done by the animators and supervisors in the GW affected village/hamlet to find out additional case if any 566 GW rumours were received through post cards but only nine cases were confirmed.

the project key messages through various methods and media, distribute IEC material, organise prabhat pheri and cultural programme in local dialects, write wall slogans and display posters etc. The teams also visit the school to collect rumours of GW cases and to impart health education to the students.

- ⇒ Training and orientation of field functionaries involved in the programme and other community leaders are organised from time to time to seek their active participation.
- ⇒ In order to detect each hidden foci, an incentive scheme of awarding the informer of the case as well as to the GW patient is in place. After confirmation of the case, the informer gets Rs. 500/- where as the patient gets Rs. 1000/- besides free treatment, meals and Rs. 22/- per day for loss of wages during the course of isolation in the sentinel hospital/ PHC.
- ⇒ Each project district has one sentinel hospital cum mobile team responsible for verification of rumours, supervision and monitoring of case containment measures including surgical extraction.
- ⇒ On the basis of information received from animalors, the project officers send a fortnightly report to concerned District Executive Engineer informing about functioning or non-functioning of water supply sources in the affected villages. The corrective measures are undertaken promptly and if required additional water source is provided on priority basis.
- ⇒ The PHED Principal secretary presides over the meetings of the committee of directions (COD) composed of representatives from RIGEP, SWACH, MH & FWD, UNICEF, PHED and RDD & PR periodically. The progress of all project components viz. surveillance and case containment, water supply, IEC, RSP, etc are reviewed and discussed at length for further improvement.
- ⇒ The District Collector is the over all executive who coordinates the project implementation in the district. Regular meetings of CM & HO /Dy CM & HO (H), Project Officer RIGEP, GW EST, PHED XEn are held for exchange their information under the chairmanship of district collector.
- ⇒ In order to involve the media (AIR, TV & PRESS), two workshops of media personal have been organised. The efforts being made for GW eradication are highlighted on TV, AIR and News Papers. The Akashwani Kendra Jodhpur was kind enough to produce 15 Radio spots on GW eradication. Which are broad casted in the GW affected areas on a regular basis. A Unique Radio concert has also been organised in one of the highly GW affected village Chainpura.
- ⇒ A State level task force has been constituted comprising representatives from medical & health, PHED, UNICEF, RIGEP and RDD & PR who undertakes field visits periodically to evaluate the project implementation and also to strengthen coordination among line departments.

GUINEAWORM SITUATION AS IN 1995 AND 1996

The RIGEP was officially sanctioned in the year 1992 and 12 districts were reporting guineaworm cases at that time. 792 GW cases were detected in 191 active case villages in the year 1992 but on account of the above strategy and intensified efforts only three districts viz. Jodhpur, Nagaur and Bikaner remained affected with 76 cases in 1995. After screening of 566 rumours, only 9 cases have been confirmed in 3 villages of Phalodi Tehsil during the year 1996. which is a significant achievement.

- * All supervisory staff was mobilized in the field for effective implementation of containment measures in the GW affected areas.
- * Two days village intensive drives (VID) were organised in the affected villages to impart health education to the community.
- * After identification of all unsafe water sources in the affected villages, the Nadi Rakashaks were deployed to guard 41 Nadies round the clock.
- * The availability and regular use of funnel devices i.e. Funnel filter, Camel cart filter, water bottles and filter straw by the community was ensured.
- * A micro-planning for temephos application was done for 27 GW affected villages of Jodhpur, Nagaur and Bikaner. A format was devised for monitoring of this activity at State level. Though the activity was undertaken properly in Nagaur and Bikaner Districts but due to lack of supervision, it could not be implemented to the desired extent in Jodhpur District.
- * All activities approved in annual work plan of 1996 have been undertaken as shown in Annexure.
- * The school competition was organised in 57 schools wherein 7130 students participated. 280 winners were awarded.
- * The Guineaworm education day (GED) was celebrated on 25th April at State, District and active case village level. Meetings were organised to focus the problem among general masses. A panel discussion and video film "The Healing Touch" was telecasted from Jaipur Door Darshan.
- * 15 Radio spots produced by Akashwani Kendra Jodhpur are being broadcasted by AIR stations of GW affected Districts.
- * A unique activity of Radio concert was done by AIR Jodhpur in highly GW affected village Chainpura wherein cultural programme conveying GW messages was presented by local Radio Artists.
- * The Video film of Radio concert and healing touch are screened in the field during VIDs.
- * The water supply schemes were prepared and commissioned in the GW affected villages/dhanies on priority basis. The details are shown in the Annexure.
- * Since women have a vital role in drinking water management in rural areas, 124 mahila mandals were formed and they are functioning well in the project area. They are actively involved in various village level activities under guineaworm eradication. Their monthly meetings are regularly organised by the female animators at village and dhani level.
- * All possible efforts have been made to prevent the guineaworm disease transmission in 1996 and it is hoped that there may not be any single GW case in the year to come.

MATERIAL AND FINANCIAL SUPPORT BY UNICEF

The Annual Action Plan of RIGEP for the year 1996 was prepared in consultation of UNICEF Authorities. The financial, technical and material support being extended by UNICEF is thankfully acknowledged. Without their support, the grand success of reduction in GW incidence could not have been achieved.

Material Support –

1. Funnel Filters
2. Camel Cart Filters
3. Straw Filters
4. Drinking water bottles
5. Printed material viz. Flip books, Posters, Stickers, Hoarding Boards
6. Development of Documentry Film, Audio Cassattes, Radio Concert
7. Additional transportation support for Temephos application.

PROVISION OF DRINKING WATER SUPPLY

Under RIGEP programme there is a provision for selective drinking water supply activities in the districts of Barmer, Jhalawar, Bikaner, Jodhpur and Nagaur; which includes supply/support of new drill rigs, construction of new hand-pumps, construction of piped water supply schemes and conversion of public step-wells. The total water supply activity component of the project is Rs. 18.84 crores out of the sanctioned cost of Rs. 27.12 crores.

As on 1st January 97, schemes worth Rs. 1840.24 lakhs have been sanctioned in all five primary districts namely Jodhpur, Nagaur, Bikaner, Barmer and Jhalawar. The details of sanctioned schemes are detailed below–

1.1 WATER SUPPLY SCHEMES SANCTIONED AS PER PRIORITY OF GW AFFECTED VILLAGES

Category of Villages												
Srl. No.	Name of District	I (1996)			II (1995)			III (1994)			Others (1993,92,91)	
		Total No. of GW Villages	W.S.S. Sanctioned	Cost Lacs	Total No. of GW Villages	W.S.S. Sanctioned	Cost Lacs	Total No. of GW Villages	W.S.S. Sanctioned	Cost Lacs	W.S.S. Sanctioned	Cost Lacs
1.	Jodhpur	03	01	18.61	10	08	61.80	31	19	120.63	40	138.95
2.	Nagaur	-	-	-	10	09	94.95	33	30	85.72	30	268.13
3.	Bikaner	-	-	-	4	3	68.31	10	10	159.85	-	-
4.	Barmer	-	-	-	-	-	-	07	05	70.23	39	382.12
5.	Jhalawar	-	-	-	-	-	-	-	-	-	306	352.17
Total		03	01	18.61	24	20	225.06	81	64	436.43	415	1141.37

1.2 ADMINISTRATIVE AND FINANCIAL SANCTION FOR PROVISION OF WATER SUPPLY

Srl. No.	Name of District	Water Supply Scheme					Water Transportation Amount Lacs	Erection of Poles Amount Lacs	Conversion of Stepwells Lacs	Total Amount Lacs
		I Amount Lacs	II Amount Lacs	III Amount Lacs	Others Amount Lacs	Total Amount Lacs				
1.	Jodhpur	18061	61.80	120.95	139.95	339.99	9.79	1.29	-	351.07
2.	Nagaur	-	94.95	85.72	268.13	448.80	9.48	0.88	-	459.16
3.	Bikaner	-	68.31	159.85	-	228.16	3.22	-	-	231.48
4.	Barmer	-	-	70.23	382.12	452.35	3.60	0.49	-	456.44
5.	Jhalawar	-	-	-	352.17	352.17	-	-	18.77	370.94
Total		18.61	225.06	436.43	1141.37	1821.47	26.09	2.66	18.77	1869.09

1.3 Position of hand pumps sanctioned and executed as on 1.1.97

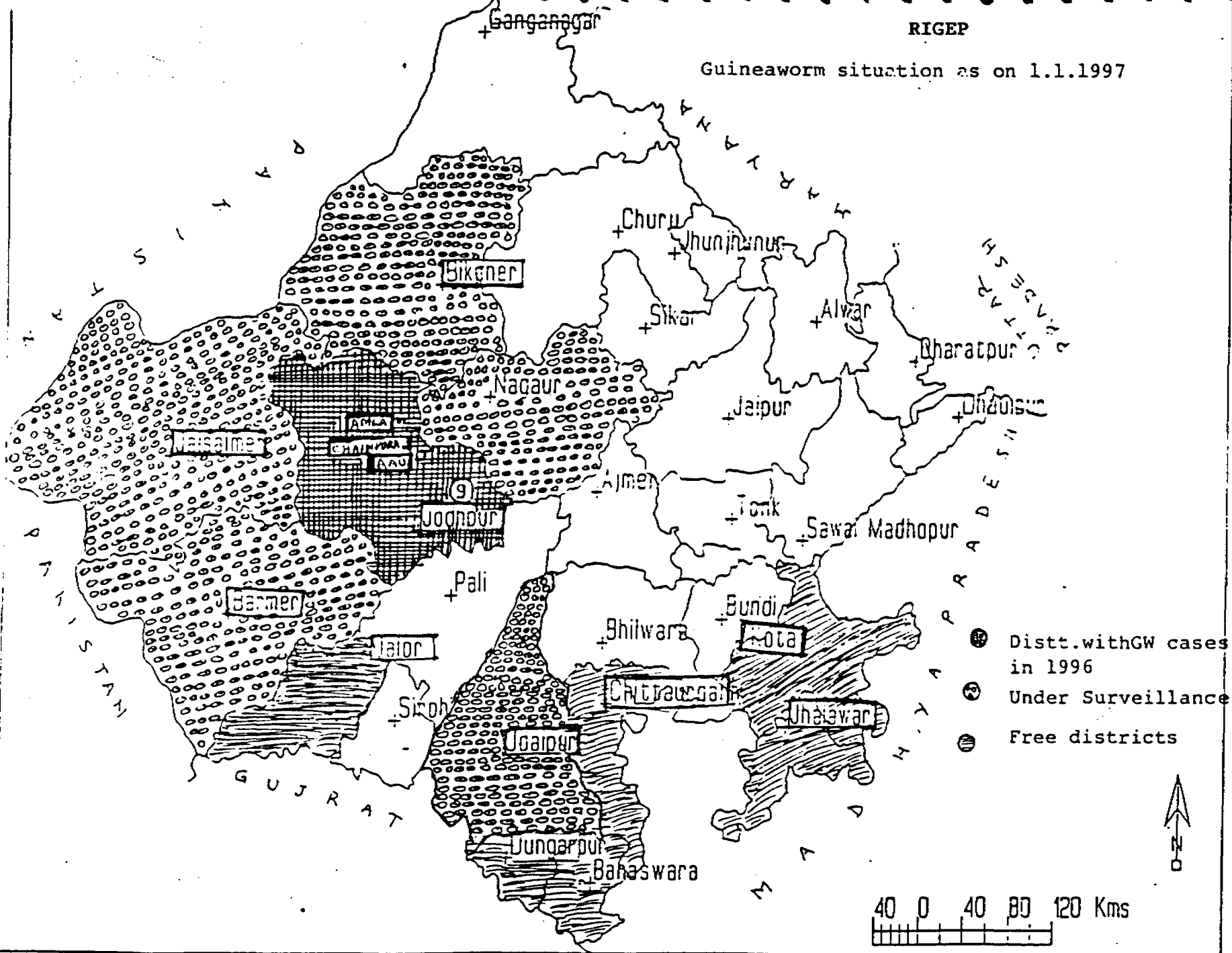
Name of District	Total H.P. sanctioned	Dropped	Drilled & Failed	Drilled & Successful	Commissioned
Jodhpur	236	36	22	180	170
Nagaur	154	3	18	129	129
Jhalawar	1173	-	142	1051	1051
Barmer	6	-	1	5	5
Total	1569	39	183	1365	1355

1.4 Position of water supply schemes sanctioned & commissioned as on 1.1.97

Name of District	Village Sanctioned			Commissioned			No. of Schemes dropped
	H.P. Scheme	Piped Scheme	Total	H.P. Scheme	Piped Scheme	Total	
Jodhpur	38	30	68	36	6	42	16
Nagaur	21	48	69	20	25	45	13
Bikaner	-	13	13	-	6	6	-
Barmer	2	42	44	2	29	31	13
Jhalawar	306	-	306	306	-	306	-
Total	367	133	500	364	66	430	42

RIGEP

Guineaworm situation as on 1.1.1997



WORK PLAN FOR VARIOUS ACTIVITIES / TASKS / SUB-TASKS UNDER RIGEP DURING 1996

S. No.	Activity	Responsibility	Jan	Feb	Mar	Apr	May	Jun	Jul	Aug	Sep	Oct	Nov	Dec	Remarks
TRAINING/ORIENTATION															
1.	Animators / Supervisors refreshers course	POs	xxx	xxx											
2.	PO/APO/OIC refresher course	IEC				xxx									
3.	Media workshop of AIR Prof. Executives	IEC					xxx								
4.	GW Patients (1995) orientation	POs						xxx							
5.	Para Medical staff orientation	POs					xxx								
6.	Teacher's orientation	POs		xxx											
7.	Elected representatives orientation	POs			xxx	xxx	xxx								
8.	Mahila Mandal members trg.	Pos			xxx										
9.	Camel cart owners orientation	Pos					xxx	xxx							
10.	Patwan, VLW, ICDS workers orientation	Pos				xxx	xxx	xxx							
HEALTH EDUCATION ACTIVITIES															
11.	IEC Maternal display	PO	xxx	xxx	xxx	xxx	xxx	xxx	xxx	xxx	xxx	xxx	xxx	xxx	Continued active
12.	Students competition	PO		xxx						xxx					
13.	VID	PO					xxx		xxx						
14.	GW Education day	PO				xxx									
15.	School visit	PO	xxx	xxx	xxx	xxx	xxx	xxx	xxx	xxx	xxx	xxx	xxx	xxx	Continued active
16.	Slogan Writing	PO	xxx	xxx	xxx	xxx	xxx	xxx	xxx	xxx	xxx	xxx	xxx	xxx	Continued active
SURVEILLANCE ACTIVITY															
17.	Sending weekly Post cards	Ani & Su	xxx	xxx	xxx	xxx	xxx	xxx	xxx	xxx	xxx	xxx	xxx	xxx	Continued active
18.	Rumors verification	IC SH	xxx	xxx	xxx	xxx	xxx	xxx	xxx	xxx	xxx	xxx	xxx	xxx	Continued active
19.	Case management incl. isolation SH/PHC	IC SH	xxx	xxx	xxx	xxx	xxx	xxx	xxx	xxx	xxx	xxx	xxx	xxx	As & when case is confirmed
20.	Regular field visits in priority	PO/OIC/IC SH	xxx	xxx	xxx	xxx	xxx	xxx	xxx	xxx	xxx	xxx	xxx	xxx	Continued active
21.	Weekly GW case report	PO/OIC	xxx	xxx	xxx	xxx	xxx	xxx	xxx	xxx	xxx	xxx	xxx	xxx	Continued active
22.	Monthly GW case report	PO/OIC	xxx	xxx	xxx	xxx	xxx	xxx	xxx	xxx	xxx	xxx	xxx	xxx	Continued active
23.	Joint pre search operation	PO+Med			xxx		xxx						xxx		
24.	Joint search operation	PO+Med				xxx		xxx						xxx	
25.	Temposse application on 25 days intervals	Medical + Pos	xxx	xxx	xxx	xxx	xxx	xxx	xxx	xxx	xxx	xxx	xxx	xxx	Continued active
26.	Animators and Sup. Monthly meeting	PO/OIC	xxx	xxx	xxx	xxx	xxx	xxx	xxx	xxx	xxx	xxx	xxx	xxx	Continued active
27.	Para Medical Monthly meeting	PO	xxx	xxx	xxx	xxx	xxx	xxx	xxx	xxx	xxx	xxx	xxx	xxx	Continued active
28.	Mahila Mandal members monthly meetings	PO	xxx	xxx	xxx	xxx	xxx	xxx	xxx	xxx	xxx	xxx	xxx	xxx	Continued active
29.	Monthly meeting with Medical / PHED user chairmanship of District Collector	PO	xxx	xxx	xxx	xxx	xxx	xxx	xxx	xxx	xxx	xxx	xxx	xxx	Continued active
30.	Weekly work report of OIC	OIC	xxx	xxx	xxx	xxx	xxx	xxx	xxx	xxx	xxx	xxx	xxx	xxx	Continued active
31.	Weekly meeting with CMHO / Dy CMHO(H)	PO	xxx	xxx	xxx	xxx	xxx	xxx	xxx	xxx	xxx	xxx	xxx	xxx	Continued active
32.	Weekly meeting with OIC/PHC/EST	OIC	xxx	xxx	xxx	xxx	xxx	xxx	xxx	xxx	xxx	xxx	xxx	xxx	Continued active
WATER SUPPLY ACTIVITY															
33.	Weekly meeting with EE PHED	PO/OIC	xxx	xxx	xxx	xxx	xxx	xxx	xxx	xxx	xxx	xxx	xxx	xxx	Continued active
34.	Fortnightly report of water supply from OIC-PO-RIGEP Hars	PO	xxx	xxx	xxx	xxx	xxx	xxx	xxx	xxx	xxx	xxx	xxx	xxx	Continued active
STATE LEVEL ACTIVITIES															
35.	Task force visit	IEC		xxx		xxx		xxx		xxx		xxx		xxx	
36.	COO meeting	IEC			xxx			xxx			xxx			xxx	
37.	Finance committee meeting	IEC		xxx			xxx			xxx			xxx		
38.	Joint meeting of MHFWO, UNICEF & RIGEP	IEC						xxx					xxx		

WORK PLAN FOR VARIOUS ACTIVITIES / TASKS / SUB-TASKS UNDER RIGEP DURING 1997 IN DISTRICT

S. No.	Activity	Responsibility	Jan	Feb	Mar	Apr	May	Jun	Jul	Aug	Sep	Oct	Nov	Dec	Remarks
TRAINING/ORIENTATION															
1	Animators / Supervisors refresher course	POs					xxx								
2	PO/APO/OIC refresher course	IEC		xxx											
3	Media workshop of AIR Prof. Executives	IEC				xxx									
4	GW Patients (1995 & 1996) orientation	POs			xxx										
5	Para Medical staff orientation	POs		xxx											
6	Teacher's orientation	POs		xxx											
7	Elected representatives orientation	POs			xxx										
8	Manika Mandal members trg.	POs				xxx									
9	Camel cart owners orientation	POs						xxx							
10	VLV (Patwan, Gram sevak, ICDS worker, P-ED worker) orientation	POs		xxx											
11	PHED workers training			xxx											
HEALTH EDUCATION ACTIVITIES															
1	IEC Maternal display	PO	xxx	xxx	xxx	xxx	xxx	xxx	xxx	xxx	xxx	xxx	xxx	xxx	Continued active
2	Students competition	PO		xxx											
3	IEC in 1995, 1996 villages	PO					xxx	xxx		xxx					
4	GW Education day 25 th April	PO				xxx									
5	School visit by field visit	PO	xxx	xxx	xxx	xxx	xxx	xxx	xxx	xxx	xxx	xxx	xxx	xxx	Continued active
6	Slogan Writing	PO			xxx	xxx	xxx	xxx			xxx	xxx			Continued active
7	Others training														
SURVEILLANCE ACTIVITY															
1	Sending weekly Post cards	Amr & Su	xxx	xxx	xxx	xxx	xxx	xxx	xxx	xxx	xxx	xxx	xxx	xxx	Continued active
2	Rumors verification	I/C SH	xxx	xxx	xxx	xxx	xxx	xxx	xxx	xxx	xxx	xxx	xxx	xxx	Continued active
3	Case management incl. isolation at SH/PHC	I/C SH	xxx	xxx	xxx	xxx	xxx	xxx	xxx	xxx	xxx	xxx	xxx	xxx	As & when case is confirmed
4	Regular field visits in risk villages	PO/OIC/I/C SH				xxx	xxx	xxx	xxx	xxx	xxx				
5	Weekly GW case report	PO/OIC	xxx	xxx	xxx	xxx	xxx	xxx	xxx	xxx	xxx	xxx	xxx	xxx	Continued active
6	Monthly GW case report	PO/OIC	xxx	xxx	xxx	xxx	xxx	xxx	xxx	xxx	xxx	xxx	xxx	xxx	Continued active
7	Joint pre search meeting with medical department	PO+Med				xxx		xxx						xxx	
8	Joint search operation (Medical + RIGEP)	PO+Med				xxx		xxx						xxx	
9	Temohse application in identified unsafe sources of 1995-1996	Medical + POs						xxx	xxx	xxx	xxx	xxx	xxx	xxx	
10	Animators and Sup. Monthly meeting	PO/OIC	xxx	xxx	xxx	xxx	xxx	xxx	xxx	xxx	xxx	xxx	xxx	xxx	Continued active
11	Para Medical Monthly meeting	PO+SMO(PHC)	xxx	xxx	xxx	xxx	xxx	xxx	xxx	xxx	xxx	xxx	xxx	xxx	Continued active
12	Manika Mandal members monthly meetings	PO+OIC	xxx	xxx	xxx	xxx	xxx	xxx	xxx	xxx	xxx	xxx	xxx	xxx	Continued active
13	Monthly meeting with Medical / PHED user chairmanship or District Collector	PO			xxx			xxx			xxx			xxx	
14	Weekly work report of OIC	OIC+PO	xxx	xxx	xxx	xxx	xxx	xxx	xxx	xxx	xxx	xxx	xxx	xxx	Continued active
15	Weekly meeting with CMHO / Dy. CMHO / I-EST / PHED	PO+TCMHO	xxx	xxx	xxx	xxx	xxx	xxx	xxx	xxx	xxx	xxx	xxx	xxx	Continued active
16	Weekly meeting with OIC/PHC/EST	OIC	xxx	xxx	xxx	xxx	xxx	xxx	xxx	xxx	xxx	xxx	xxx	xxx	Continued active

S. No.	Activity	Responsibility	Jan	Feb	Mar	Apr	May	Jun	Jul	Aug	Sep	Oct	Nov	Dec	Remarks
WATER SUPPLY ACTIVITY															
1.	Weekly meeting with EE PHED	PO O.C	xxx	xxx	xxx	xxx	xxx	xxx	xxx	xxx	xxx	xxx	xxx	xxx	Continued active
2.	Fortnightly report of water supply from OIC-PO-RIGEP Hqrs Monthly tour programme and diary of fields Monthly financial expenditure report Monthly physical progress Monthly statement of Postcards	PO	xxx	xxx	xxx	xxx	xxx	xxx	xxx	xxx	xxx	xxx	xxx	xxx	Continued active
STATE LEVEL ACTIVITIES															
1.	Task force visit	EC			xxx			xxx			xxx			xxx	
2.	CCD meeting	EC			xxx			xxx			xxx			xxx	
3.	Finance committee meeting	EC		xxx			xxx			xxx			xxx		
4.	Joint meeting of M.HFWO, UNICEF & RIGEP	EC		xxx					xxx					xxx	
5.	Any others training														

RAJASTHAN INTEGRATED GUINEAWORM ERADICATION PROJECT

DETAILS OF GW PATIENTS DETECTED AND MANAGED FROM 1ST JAN TO 31ST DEC 1996

District	PHC	Date of Intc	Date of Vari.	Manag. of period by Surg. Ext.	Name of Village	Name of Dhani	Name of Patient	S/o, W/o, D/o	Age	Sex	Stage	Pre	Post	Home / Hosp. where Ext.	Affected part of body	Isolation at	Whether Verified by MHFWD	No. of Worms	Village Status New / Reinf / old then cate.	Date of discharge
1. Jodhpur	Peelwa	21.4.96	24.4.96	24.4.96	Chainpura	Rao ki Dhani	Ashok	S/o Surta Ram Vishnoi	14	M	IA	1	-	Hosp	Lt Foot	S.H.Osian	Yes	1	Old Priority (1995 active case village)	25.4.96
		05.5.96	06.5.96	08.5.96 to 10.5.96	-do-	-do-	-do-	-do-	-do-	-do-	IA	1	-	Hosp	Lt Foot	S.H.Osian	Yes	1	-do-	17.5.96
		23.6.96	24.6.96	25.6.96 to 27.6.96	-do-	-do-	-do-	-do-	-do-	-do-	-do-	-do-	-do-	-do-	-do-	-do-	-do-	-do-	-do-	05.7.96
2. Jodhpur	Peelwa	21.4.96	24.4.96	24.4.96 to 25.4.96	-do-	-do-	Surta Rao	S/o Jai Ram Vishnoi	40	M	IA	1	-	-do-	Lt ankle	-do-	-do-	-do-	-do-	25.4.96
		16.6.96	17.6.96	24.6.96 to 27.6.96	-do-	-do-	-do-	-do-	-do-	-do-	-do-	-do-	-do-	-do-	Rt ankle	-do-	-do-	-do-	-do-	11.7.96
3. Jodhpur	Peelwa	3.5.96	5.5.96	6.5.96 to 8.5.96	-do-	Jangoo ki Dhani	Dannu Rao	S/o Bhikha Ram Meghwal	65	M	IA	1	-do-	-do-	Lt thigh	-do-	-do-	-do-	-do-	
		7.5.96	7.5.96	8.5.96 to 13.5.96	-do-	-do-	-do-	-do-	-do-	-do-	IIB	-do-	-do-	-do-	Rt Foot	-do-	-do-	-do-	-do-	
		25.5.96	25.5.96	25.5.96	-do-	-do-	-do-	-do-	-do-	-do-	IA	-do-	-do-	-do-	Lt ankle	-do-	-do-	-do-	-do-	31.5.96
4. Jodhpur	Peelwa	11.5.96	12.5.96	16.5.96 to 17.5.96	-do-	-do-	Kabhu	D/o Dannu Ram	13	F	IA	-do-	-do-	-do-	Post side of Lt ankle	-do-	-do-	-do-	-do-	22.5.96
5. Jodhpur	Peelwa	19.5.96	20.5.96	20.5.96	-do-	Samelo ki Dhani	Abdul Azz	S/o Nizamuddin	21	M	IA	-do-	-do-	-do-	Rt Foot	-do-	-do-	-do-	-do-	30.5.96
6. Jodhpur	Peelwa	14.5.96	19.5.96	21.5.96 to 1.6.96	Amla	Chodhano ki Dhani	Dungar Rao	S/o Atsa Ram	25	M	IIB	-do-	-do-	-do-	Rt Heel	-do-	-do-	-do-	Old Priority (1993 active case village)	2.5.96
7. Jodhpur	Peelwa	2.7.96	5.7.96	11.7.96	Aau	Kumharo ki Dhani	Bhanwaru Ram	S/o Anupa Ram Kumhar	25	M	IIB	-do-	-do-	-do-	Rt ankle	-do-	-do-	-do-	Old Priority (1995 active case village)	LAMA on 6.7.96 Resubmitted on 11.7.96 and discharged on 24.7.96
8. Jodhpur	Peelwa	3.7.96	3.7.96	6.7.96	Chainpura	Rao ki Dhani	Smt. Jiya	W/o Jai Ram Vishnoi	76	F	IA	-do-	-do-	Field	Rear part of knee	Home	-do-	-do-	Old / Priority	6.7.96
9. Jodhpur	Peelwa	12.7.96	13.7.96	14.7.96	Aau	Kumharo ki Dhani	Suna Kumhar	D/o Anupa Ram Kumhar	15	F	IIB	-do-	-do-	Hosp	Lt foot	S.H.Osian	-do-	-do-	Old / Priority	14.7.96

RAJASTHAN INTEGRATED GUINEAWORM ERADICATION PROJECT- JAIPUR
COMPARATIVE STATEMENT OF WEEKWISE GW INCIDENCE IN 1995 AND 1996.
YEAR 1995

S.No.	1995		JAN							FEB							MAR							APR							MAY							JUN							JULY							AUG							SEPT							OCT							NOV							DEC							TOTAL
	1	2	3	4	5	6	7	8	9	10	11	12	13	14	15	16	17	18	19	20	21	22	23	24	25	26	27	28	29	30	31	32	33	34	35	36	37	38	39	40	41	42	43	44	45	46	47	48	49	50	51	52																																			
1	JOODIPUR																																																				36																																		
2	BAGLUR																																																				28																																		
3	BIRAKNER																																																				12																																		
4	BARNER																																																				0																																		
5	JAISALMER																																																				0																																		
6	JHALWAR																																																				0																																		
TOTAL																																																						76																																	
CIRCULATI- VE TOTAL																																																						76																																	

YEAR 1996

S.No.	1996		JAN							FEB							MAR							APR							MAY							JUN							JULY							Aug							Sep							Oct							Nov							Dec							TOTAL
	1	2	3	4	5	6	7	8	9	10	11	12	13	14	15	16	17	18	19	20	21	22	23	24	25	26	27	28	29	30	31	32	33	34	35	36	37	38	39	40	41	42	43	44	45	46	47	48	49	50	51	52																																			
1	JOODIPUR																																																				9																																		
2	BAGLUR																																																				0																																		
3	BIRAKNER																																																				0																																		
4	BARNER																																																				0																																		
5	JAISALMER																																																				0																																		
6	JHALWAR																																																				0																																		
TOTAL																																																						9																																	
CIRCULATI- VE TOTAL																																																						9																																	

RAJASTHAN INTEGRATED GUINEAWORM ERADICATION PROJECT

DISTRICT, PHC AND VILLAGE WISE GW SITUATION FROM 1992-1996

District	PHC	Village	1992	1993	1994	1995	1996
Jodhpur	1. Matimla	1. Bapni	113	8	21	0	0
		2. Bedu	0	4	1	0	0
		3. Bhikankore	0	0	1	0	0
		4. Bhimsagar	0	0	1	0	0
		5. Bhojakore	0	0	1	0	0
		6. Chandrak	0	5	1	0	0
		7. Jakhn	22	24	12	0	0
		8. Kadwa	8	10	6	0	0
		9. Kapuria	0	0	1	0	0
		10. Kinjari	0	0	1	0	0
		11. Matora	4	10	2	0	0
		12. Meera ki Nimri	0	0	7	0	0
		13. Nevra	0	9	8	1	0
		14. Nimbo ka Talab	30	4	1	0	0
		15. Nosar	29	24	3	0	0
		16. Punasar	0	32	14	1	0
		17. Palli	0	0	0	2	0
	2. Peolwa	1. Anu	29	24	11	5	2
		2. Barjasar	0	32	8	1	0
		3. Bhojasar	0	0	9	1	0
		4. Chainpura	0	0	0	14	6
		5. Chadi	18	26	49	1	0
		6. Dabar	0	0	0	4	0
		7. Denok	0	0	1	0	0
		8. Ishru	0	8	4	1	0
		9. Kerla	11	8	2	0	0
		10. Munjasar	0	0	1	2	0
		11. Palwa	9	16	9	0	0
		12. Ridmalsar	0	0	3	0	0
		13. Amla	0	0	0	0	0
	3. Bap	1. Bhungeri	0	11	1	0	0
		2. Jesla	0	0	1	0	0
		3. Naneu	0	1	2	0	0
	4. Balesar	1. Bastwa	0	1	1	0	0
		2. Deria	0	0	1	0	0
	5. Banar	1. Jajwal Bhandaria	0	0	1	0	0
		2. Dai Khara	0	0	0	2	0
		3. Salwa Kala	1	27	4	1	0
		4. Sevki	0	0	1	0	0
Nagaur	1. Basni	1. Akhasar	0	0	3	0	0
		2. Badli	0	3	1	0	0
		3. Barangaon	0	0	2	0	0
		4. Basni	0	0	1	0	0
		5. Bhojas	13	11	18	2	0
		6. Bhundel	0	4	2	0	0
		7. Ajasar	0	0	1	0	0
		8. Chhawata Kala	0	0	1	0	0
		9. Chhawata Khurd	0	0	1	0	0
		10. Datina	8	3	4	4	0
		11. Derwa	0	0	1	0	0
		12. Dhakoria	0	0	1	0	0
		13. Dhingsara	2	3	1	0	0
		14. Guda Bhagwandas	0	0	1	0	0
		15. Nandwani	0	0	0	1	0
		16. Gudla	0	1	1	2	0
		17. Jeevanbera	0	5	1	0	0
		18. Jhadeli	0	16	13	2	0
		19. Lunda	0	0	1	0	0
		20. Nagaur	0	0	8	0	0
		21. Pabusar	0	0	1	0	0
		22. Salwa	0	2	4	0	0
		23. Satheran	0	0	1	0	0

District	PHC	Village	1992	1993	1994	1995	1996
		24 Sonnagar	0	1	7	2	0
		25 Tanawas	16	5	46	9	0
		26 Untawalia	19	4	3	0	0
		27 Athwasan	0	0	0	1	0
	2. Deh	1 Ahirpura	0	1	1	0	0
		2 Bodwa	0	2	1	0	0
		3 Deh	0	0	1	0	0
		4 Deroli	0	0	1	0	0
		5 Kherwar	0	1	1	0	0
		6 Manglod	0	1	1	0	0
		7 Rohina	7	5	3	4	0
		8 Roll	0	0	1	0	0
		9 Surpalia	0	0	1	0	0
	3. Khinwasar	1 Bhatnokka	0	0	1	0	0
		2 Dharnawas	0	0	1	0	0
		3 Dhawa	0	1	1	0	0
		4 Madpura	3	3	3	0	0
		5 Panchodi	0	0	3	0	0
		6 Roon	66	21	2	0	0
		7 Berathal Kala	3	1	0	1	0
Bikaner	1. Nokha	1 Bhandara	0	0	1	0	0
		2 Basee	0	0	8	1	0
		3 Bharnatsar	0	0	1	0	0
		4 Chitana	0	0	1	0	0
		5 Jegla	0	0	1	0	0
		6 Kahira	0	0	6	2	0
		7 Kakku	0	0	5	0	0
		8 Kedli	0	0	2	0	0
		9 Manyana	0	0	1	0	0
		10 Nokhaqaon	0	0	1	0	0
		11 Shobhana	0	0	2	0	0
		12 Sadhuna	0	5	14	0	0
		13 Sarunda	2	18	42	8	0
		14 Shekhasar	0	0	0	1	0
Barmer	1. Mandli	1. Sathuni-purohitan	0	13	6	0	0
	2. Sindhari	1 Ed Mansingh	0	0	3	0	0
		2 Kerla Pana	0	0	1	0	0
		3 Sarnu Chimanji	0	0	1	0	0
		4. Sindhari Charnan	0	0	1	0	0
	3. Baytu	1 Bothia	0	0	1	0	0
Jaisalmer	1. Bharli	1 Bharli	0	0	1	0	0
	2. Nachna	1 Chhayana	0	0	2	0	0
	3. Sam	1 Nimbali	0	0	2	0	0
	4. Sangar	1. Kunda	0	0	1	0	0

RAJASTHAN INTEGRATED GUINEAWORM ERADICATION PROJECT – JAIPUR

INDEX CASE ANALYSIS OF GUINEAWORM INCIDENCE BASED ON 1995

District	Block PHC	Village	Total GW Cases in 1995	Jan	Feb	Mar	Apr	May	Jun	Jul	Aug	Sep	Oct	Nov	Dec
1. Jodhpur	1. Peelwa	K. N. Chadi	1		****	****	****	—							
		Cabar	4		****	****	****	—	—	—	—				
		Chainpura	14		xxxx	xxxx	xxxx	—	—	—					
		Muniasar	2			xxxx	xxxx	xxxx	—						
		Isnru	1			****	****	****	—						
		Bojasar	1			****	****	****	—						
		Aau	5				xxxx	xxxx	xxxx	—	—	—			
	2. Mathania	Banasar	Banasar	1			****	****	****	—					
			Nevra	1		****	****	****	—						
			Palk	2				****	****	****	—				
	3. Banar	Punasar	Punasar	1							****	****	****	—	
			Sawa kala	1			xxxx	xxxx	xxxx	—					
			Dekhhera	2			****	****	****	—					
	Sub Total	13	36	0	0	0	0	15	10	7	2	1	1	0	0
2. Nagaur	1. Basni	Bhoras	2	****	****	—	—	—	—						
		Jhadeli	2	xxxx	xxxx	—	—	—	—	—	—				
		Nandwani	1	xxxx	xxxx	—									
		Catina	4	****	****	****	—	—	—	—					
		Athiasan	1			****	****	****	—						
		Tentwas	9			xxxx	xxxx	xxxx	—	—	—	—			
		Sonnagar	2				****	****	****	—	—				
	2. Deh	Gudia	Gudia	2					****	****	****	—	—		
			Rohna	4		****	****	****	—	—	—				
			Berathal Kaila	1					****	****	****	—			
	Sub Total	10	28	0	0	3	1	1	6	7	8	2	0	0	0
1. Bikaner	1. Nokha	Sarunda	8	xxxx	xxxx	—	—	—	—	—	—	—			
		Basl	1		****	****	****	—							
		Shekhasar	1				****	****	****	—					
		Kahra	2					****	****	****	—	—	—		
	Sub Total	4	12	0		1	2	1	1	4	1	1	0	1	0
Grand Total		27	76	0	0	4	3	17	17	18	11	4	1	1	0

**** This period indicates the duration of three months prior to probable appearance of a GW cases.

xxxx High risk Villages requiring extra ordinary vigilance.

— Represents the period in which cases were reported from a particular village. The line start when first case was reported and ends when last case(s) was / were reported.

LIST OF NADIES IDENTIFIED IN GW ACTIVE CASE VILLAGES OF 1995 AND 1996 FOR TEMEPHOS APPLICATION

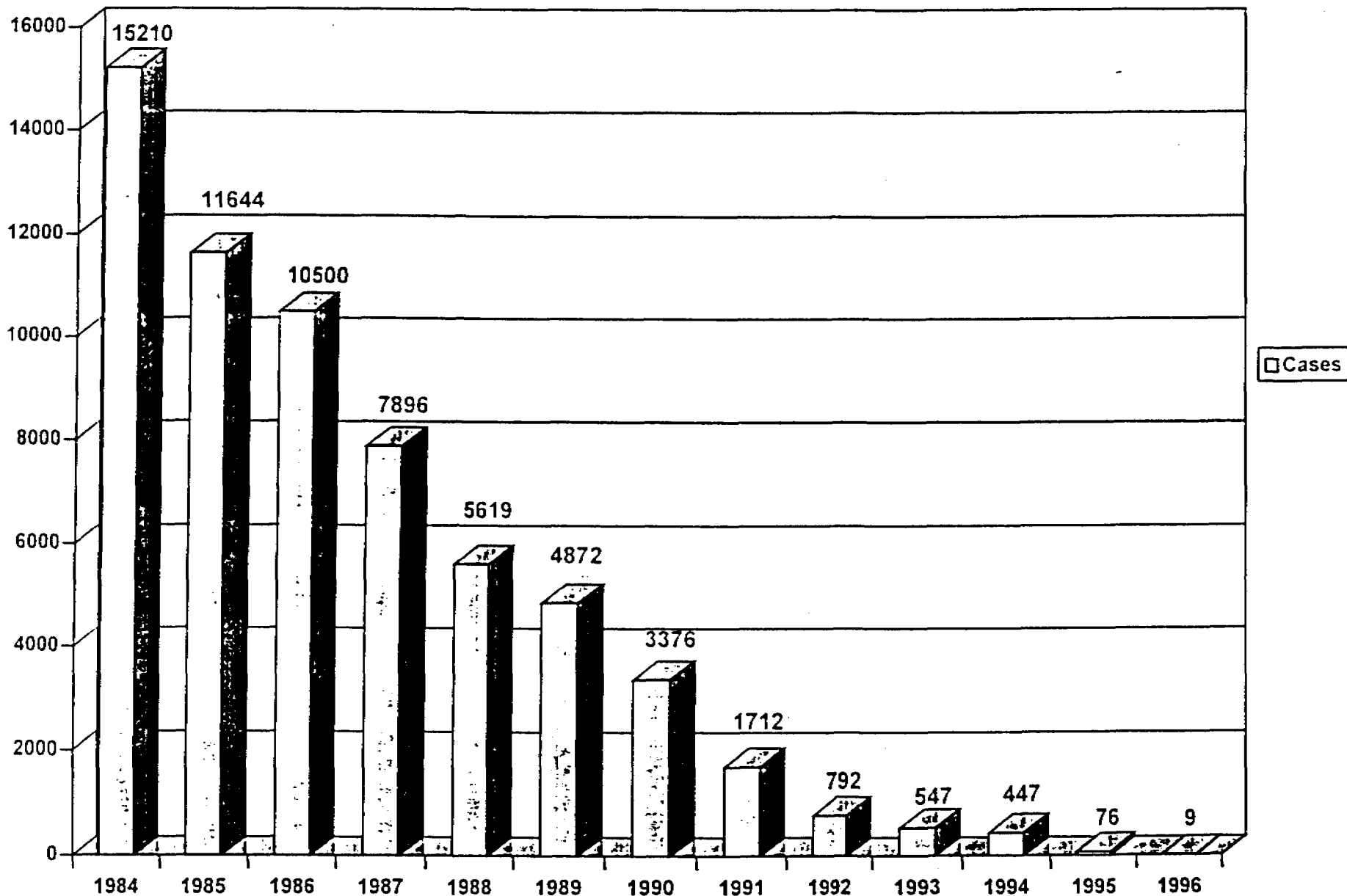
Distt	P.S.	PHC	Name of village	Name of Nadi
Nagaur	Nagaur	Basni	1. Bhojas	1 Gaon ki Nadi 2 Thamba nadi 3 Ramrai nadi 4 Mordia nadi 5 Chapali nadi (Chanperi)
			2. Jhadeli	1 Jhadeli ki Nadi 2 Rathia nada 3 Dadhiya nada 4 Natia nada
			3 Datina	1 Asolai 2 Gidia 3 Cholia khidolai 4 Badoria 5 Dedolai aakolia 6 Thorali 7 Mahanada 8 Bandhada 9 Kachodia 10 Kagia 11 Mathia 12 Maho 13 Akoliya 14 Asola 15 Ramdian
			4. Tantwas	1 Chocholai 2 Khedadali 3 Kerti 4 Polala 5 Chattalia 6 Khudalia 7 Bakula singh nada 8 Swami ka nada 9 Sawal ka nada
			5. Sonnagar	1 Jadav talab 2 Kachodia ka nada
			6. Gudala	1 Gaon ki nadi 2 Ram nada 3 Girdhla
	Jayal	Basni	7. Athiyasan	1 Gaon ki nadi 2 Rayaro ki dhani ki nadi
	Mundawa	Basni	8. Nandwani	1 Pepalai 2 Goniyan
	Mundawa	Deh	9. Rohina	1 Dhurlai 2 Kumharia 3 Nerala 4 Rudalo 5 Nadia 6 Rohina 7 Nanda

Distt	P.S.	PHC	Name of village	Name of Nadi
	Mundawa	Khingsar	10. Berathala kala	1 Gaon ki nadi 2 Gorodi nadi
Bikaner	Nokha	Nokha	1. Sarunda	1 Chadodi nadi 2 Lolai nadi 3 Lalolai nadi 4 Kerali nadi 5 Ramnada 6 Salanada 7 Bhesa nada 8 Rupada nada 9 Sarunda 10 Lumbeng 11 Kerli
			2. Basi	1 Ramnada 2 Murdanada 3 Sagat nadi 4 Lalchand lai nadi 5 Datinda nadi
			3. Shekhasar	1 Gaon ki nadi 2 Durga nada
			4. Kahira	1 Aasa nada
Jodhpur			1. Aau	1 Tena nadi 2 Chataliya 3 Derali nadi 4 Nimbali 5 Anrakwali 6 Sohantinadi 7 Khalagar wali 8 Madalinadi
	Phalodi	Peelwa	2. Chainpura	1 Indolai 2 Bajrag nadi 3 Ghadoi 4 Matalai 5 Akadawakli 6 Malaloi 7 Sudrdalai 8 Matolia 9 Ragolai 10 Ragolai 11 Sadholai 12 Arbanadi 13 Gulnadi 14 Nai nadi
			3. Amla	1 Abalai 2 Sagrali 3 Bijlai 4 Nilmal 5 Chandralai 6 Dhoranadi 7 Golnadi 8 Ratadi nadi 9 Dadiyanadi 10 Jalayat

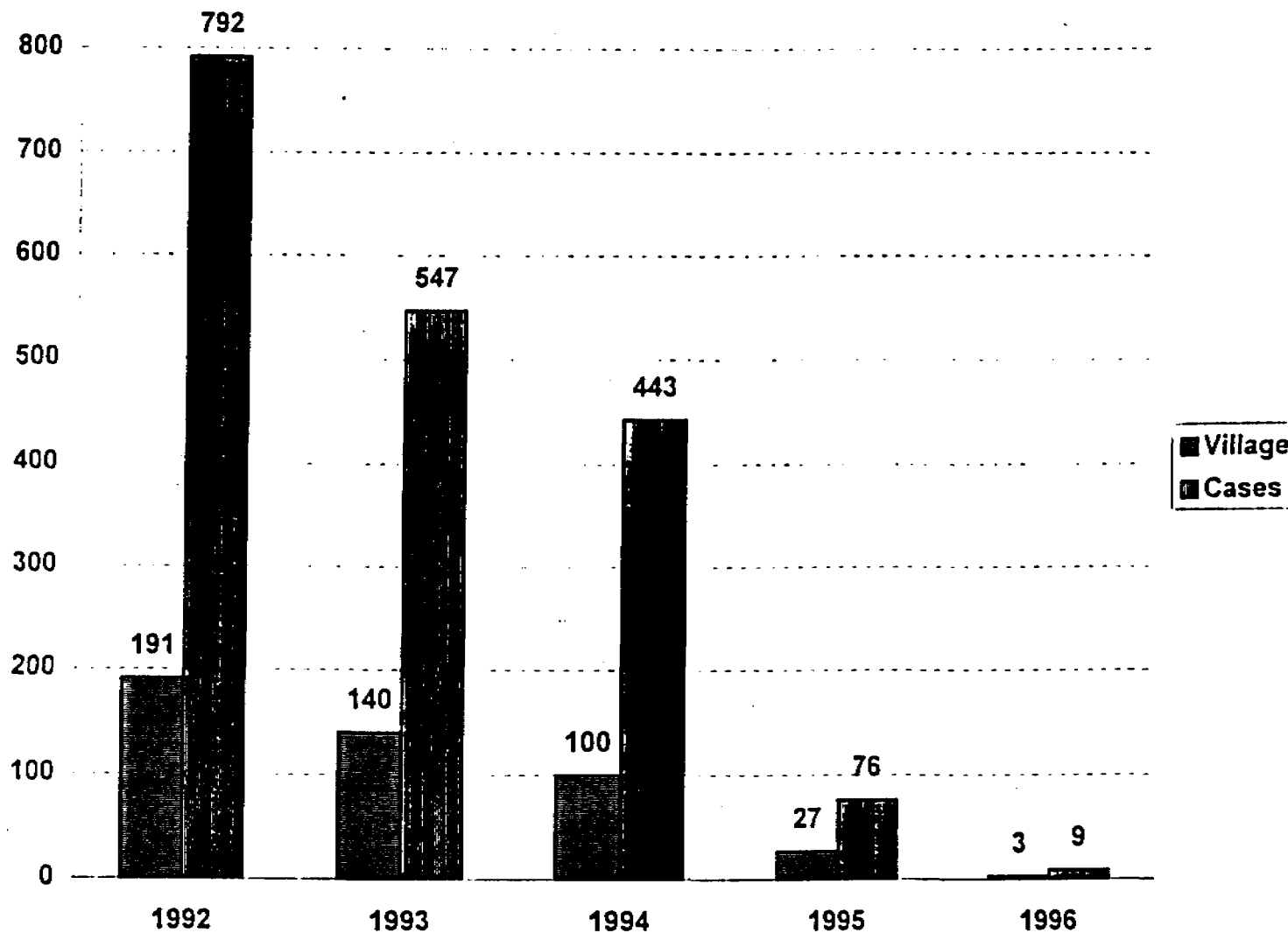
Distt	P.S.	PHC	Name of village	Name of Nadi
Jodhpur	Osla	Mathania	1. Punasar	1 Bhibaji 2 Amwala 3 Kacholia 4 Mirgi 5 Bhatalia 6 Nimbali 7 Nimbolab 8 Aamali 9 Kherla 10 Rupolab 11 Sebari 12 Bhatalia (ugali dhora)
			2. Palli	1 Ghadoi 2 Balolai 3 Adhaloi 4 Jainadi 5 Khechalai 6 Nal ka talab 7 Kolani nadi 8 Jatolai 9 Jambo lai 10 Kambolai 11 Khechaiyo ki nadi 12 Rawali nadi 13 Rohida 14 Manak lai
			3. Nevra	1 Dedasagar 2 Nevari nadi 3 Kerala nadi 4 Badli nadi 5 Harda nadi 6 Rawali bhakri 7 Ramnada 8 Gosai 9 Ratda nada 10 Bandhada nada
			6. Ishru	1 Jeewali nadi 2 Sesayia nadi
			8. Bhojasar	1 Khiyali nadi 2 Bhankari nadi 3 Saruna nadi 4 Meharamia
			9. Dabar	1 Dholiyan nada 2 Panch nada 3 Karvan nada 4 Bhojawali 5 Pinchogarh 6 Heera nada
	Mandore	Banar	10. Salwa kalla	1 Gaon ka talab 2 Chena nada 3 Nimbali nadi 4 Aamli 5 Kerala 6 Pipalai nadi 7 Giddiya

Distt	P.S.	PHC	Name of village	Name of Nadi
				8 Karnali 9 Bhooni 10 Ratanada 11 Bhatkunda 12 Kapurdi 13 Babadi 14 Chuitnadiyo 15 Bijnadio 16 Ratandedi
			11. Dahikada	1 Gaon ka talab 2 Tenkiya nada 3 Kerali nadi 4 Diplai 5 Dawant 6 Dandi 7 Kalodi 8 Moriyoy 9 Sulai 10 Kerala 11 Bhariya 12 Khetolai 13 Nawodi 14 Janaki 15 Kateo 16 Kindiya
	Phalodi	Peelwa	12. Krishna Nagar	1 Dulangi nadi 2 Dumali nadi 3 Doliya nada 4 Bijali nada 5 Chandaliya nada
			13. Barjasar	1 Lalolai 2 Natholai

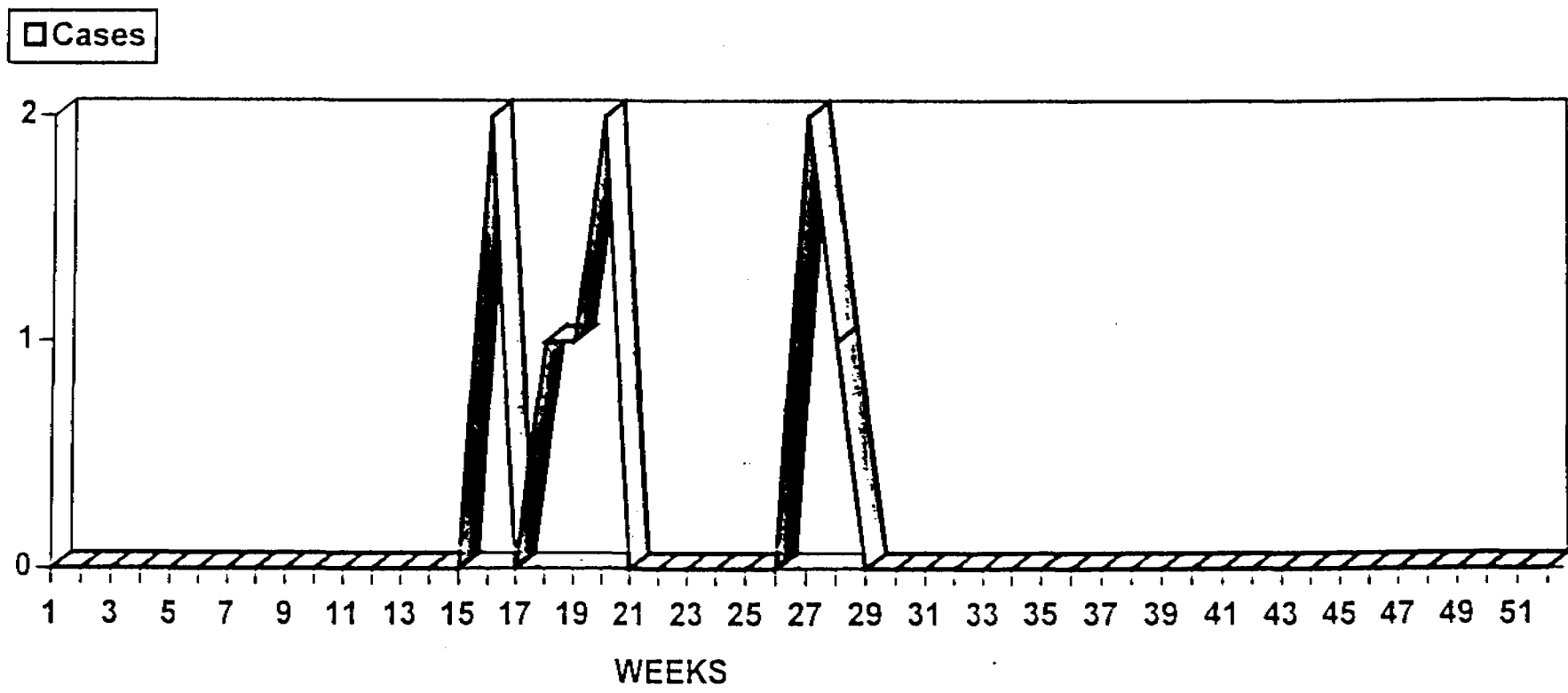
GUINEAWORM INCIDENCE IN RAJASTHAN (1984-1996)



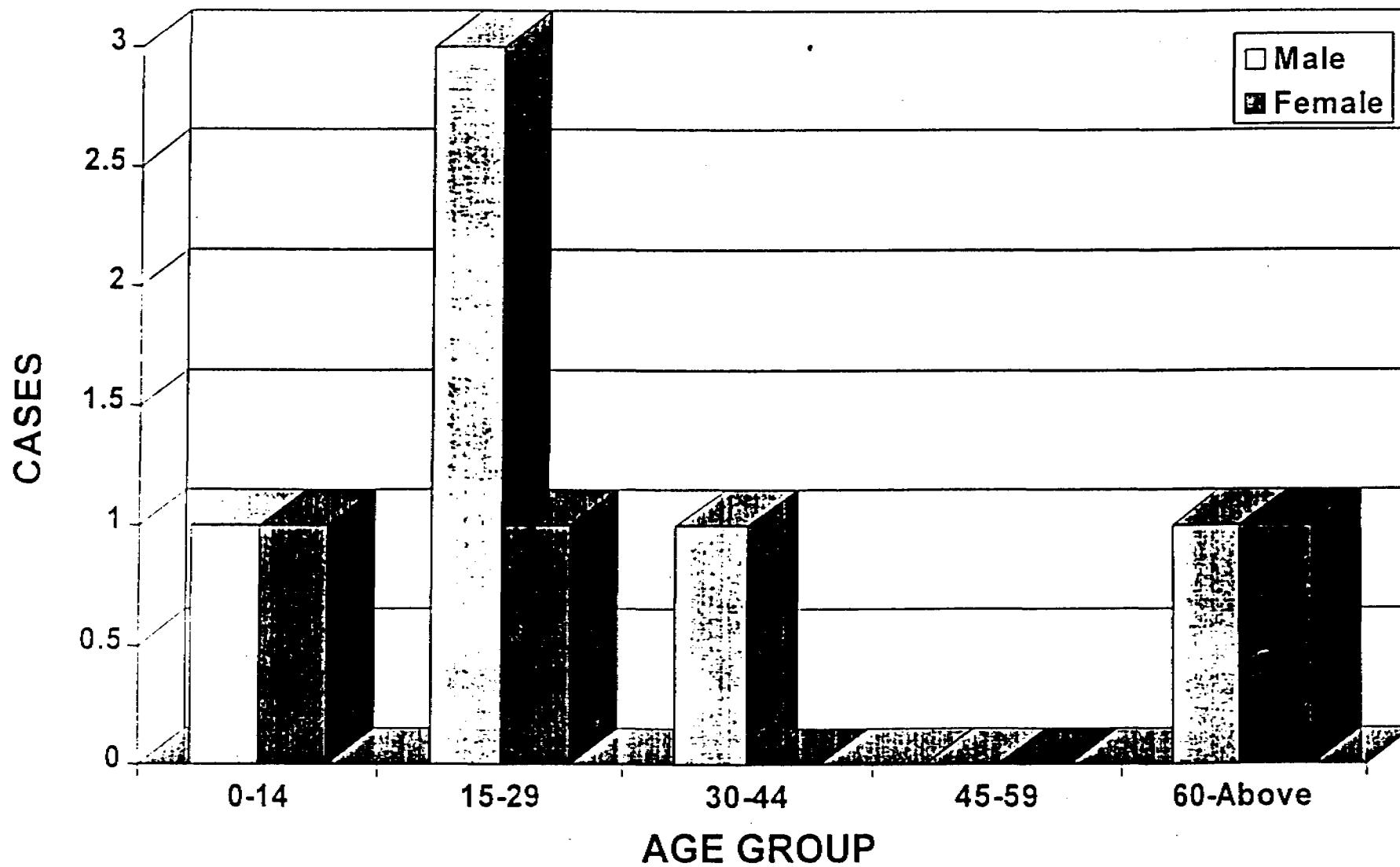
COMPARATIVE STATEMENT SHOWING GUINEAWORM ACTIVE CASE VILLAGES AND CASES (1992-1996)



RAJASTHAN INTEGRATED GUINEWORM ERADICATION PROJECT – JAIPUR
WEEKWISE GW INCIDENCE IN 1996



SEX AND AGE WISE GW CASES IN 1996



साप्ताहिक सूचना-प्रथम सप्ताह

(1) सम्पर्क किये गये परिवारों की संख्या.....

(2) नारु रोगी की सूचना हाँ / नहीं
यदि हाँ

रोगी का नाम

पिता का नाम जाति

उम्र इाणी

(3) फिस्टल वितरित किये

(घ) कमल

(ब) बाटर बोटल

(स) केमल कार्ट फिस्टर

(द) रद्दा फिस्टर

(4) मेरे क्षेत्र में कुल नाड़ी

नाड़ी सम्बंधी सूचना

क्र.सं. नाड़ी का नाम जसस्तर टेमीकोस डामने की तिथि

(घ)

(ब)

(स)

(द)

नाम सचेतक

गांव/इाणी

पं. सं.

जिला

साप्ताहिक सूचना-द्वितीय सप्ताह

(1) सम्पर्क किये गये परिवारों की संख्या

(2) नारु रोगी की सूचना हाँ / नहीं
यदि हाँ

रोगी का नाम

पिता का नाम जाति

उम्र इाणी

(3) फिस्टल वितरित किये

(घ) कमल

(ब) बाटर बोटल

(स) केमल कार्ट फिस्टर

(द) रद्दा फिस्टर

(4) मेरे क्षेत्र में कुल नाड़ी

नाड़ी सम्बंधी सूचना

क्र.सं. नाड़ी का नाम जसस्तर टेमीकोस डामने की तिथि

(घ)

(ब)

(स)

(द)

नाम सचेतक

गांव/इाणी

पं. सं.

जिला

नारु रोग से बचिये

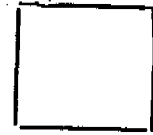
★ नारु रोगी को बावड़ी, नाले, तालाब, पोखर, नाड़ी में नही जाने दें

★ नारु रोगी के पाव पर पट्टी बांधें

★ पानी हमेशा छानकर पीजिए

★ पानी हमेशा ट्यूबवेल, हेण्डपंप या गिटगिट्टी वाले कुएँ का पिएँ

★ नारु रोगी की सूचना राजस्थान एकीकृत नारु उन्मूलन परियोजना को देकर निःशुल्क ईलाज करावें।



परियोजना अधिकारी

राजस्थान एकीकृत नारु उन्मूलन परियोजना

88, सैनिक बस्ती

नागौर (राज.)

साप्ताहिक सूचना-तृतीय सप्ताह

- (1) सम्पर्क किये गये परिवारों की संख्या.....
- (2) नाक रोगी की सूचना हा / नहीं
यदि हा
रोगी का नाम.....
पिता का नाम.....जाति.....
उम्र.....वाणी.....
- (3) फिल्टर वितरित किये
(घ) फनल.....
(ब) वाटर बोटल.....
(स) केमल कार्ट फिल्टर.....
(द) स्ट्रा फिल्टर.....
- (4) मेरे क्षेत्र में कुल नाड़ी.....
नाड़ी सम्बन्धी सूचना
- | क्र.सं. | नाड़ी का नाम | जलस्तर | टेमीकोस डालने की तिथि |
|---------|--------------|--------|-----------------------|
| (घ) | | | |
| (ब) | | | |
| (स) | | | |
| (द) | | | |
- नाम सचेतक.....
गांव/वाणी.....
प. सं.
जिला.....

साप्ताहिक सूचना-चतुर्थ सप्ताह

- (1) सम्पर्क किये गये परिवारों की संख्या.....
- (2) नाक रोगी की सूचना हा / नहीं
यदि हा
रोगी का नाम.....
पिता का नाम.....जाति.....
उम्र.....वाणी.....
- (3) फिल्टर वितरित किये
(घ) फनल.....
(ब) वाटर बोटल.....
(स) केमल कार्ट फिल्टर.....
(द) स्ट्रा फिल्टर.....
- (4) मेरे क्षेत्र में कुल नाड़ी.....
नाड़ी सम्बन्धी सूचना
- | क्र.सं. | नाड़ी का नाम | जलस्तर | टेमीकोस डालने की तिथि |
|---------|--------------|--------|-----------------------|
| (घ) | | | |
| (ब) | | | |
| (स) | | | |
| (द) | | | |
- नाम सचेतक.....
गांव/वाणी.....
प. सं.
जिला.....

नाक रोग से बचाव

- ★ नाक रोगी को बावड़ी, नाले, तामाब, पोखर, नाड़ी में नहीं जाने दें ।
- ★ नाक रोगी के घाव पर पट्टी बांधें ।
- ★ पानी हमेशा छानकर पीजिए ।
- ★ पानी हमेशा ट्यूबवेल, हेरडपम्प या गिड़गिड़ी वाले कुएँ का पिएं ।
- ★ नाक रोगी की सूचना राजस्थान एकीकृत नाक उन्मूलन परियोजना को देकर निःशुल्क इलाज करावें ।



परियोजना अधिकारी

राजस्थान एकीकृत नाक उन्मूलन परियोजना

88, सैनिक बस्ती

नागौर (राज.)

RIGOR

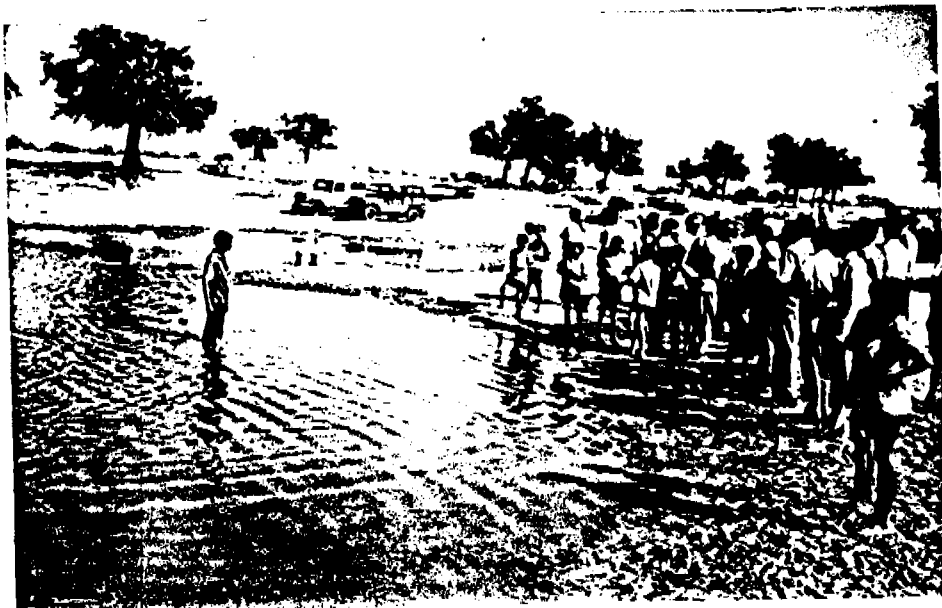
IN

PHOTOGRAPHS



A SAMPLE OF VILLAGE DRINKING SOURCE
IN ALL DESERT DISTRICTS
(RAIN WATER COLLECTION)

"OPEN SOURCE (NADI) RESPONSIBLE
FOR SPREAD G.W. DISEASE





VILLAGERS LIKING FOR
POND (NADI) WATER
DRINKING WITH FILTER DEVICE



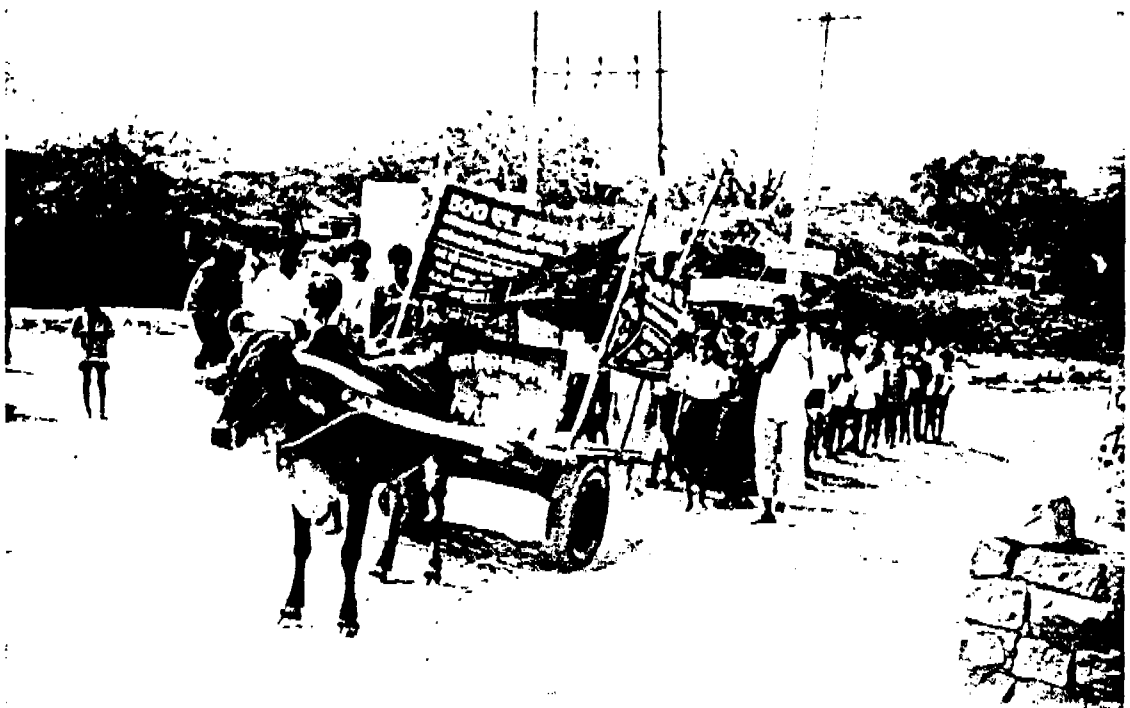


*VILLAGE MEN-WOMEN PARTICIPATION
IN ERADICATION OF G.W.*





PRABHAT PHERI (RELLY) DURING VID





ANIMATORS IMPARTING TRAINING
TO EDUCATE VILLAGERS



SURGICAL EXTRACTION OF G.W.
BY AYURVED CHIKITSAK
IN SENTINAL HOSPITAL