

3 2 1 . 4

8 9 M A

75,0157 lib

# THE REPUBLIC OF BOTSWANA

Ministry of Local Government and Lands

Central District Council

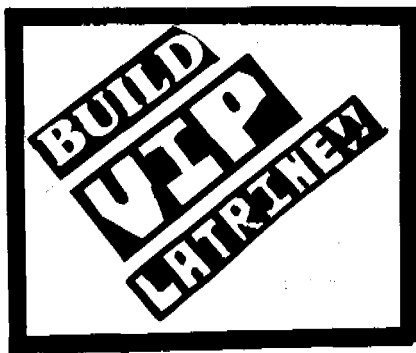
K F W

## MAJOR VILLAGES LATRINE CONSTRUCTION PROJECT

Serowe, Palapye, Tonota/Shashe/Mahalapye

A hand book for project participants.

LIBRARY  
INTERNATIONAL REFERENCE CENTRE  
FOR COMMUNITY WATER SUPPLY AND  
SANITATION (IRC)



**Towards Achieving Health All by the Year 2000**

Produced by: K F W Project coordinators (UNV)

Mr. Chellappast. Velaiyutham

Mr Joseph. Bockarlie

Mr. Elmer Rambacal.

321.4-89MA-6157

## TABLE OF CONTENTS

- I) The place of the Ventilated Improved Pit VIP latrine in public health and primary health care.
- II) Where to get assistance for building a VIP latrine in your village.
- III) What assistance does the Central District Council offer?
- V) Method of constructing a VIP latrine.
- VI) Key facts about the use and maintenance of a VIP latrine.

LIBRARY, INTERNATIONAL REFERENCE  
CENTRE FOR COMMUNITY WATER SUPPLY  
AND SANITATION (IRC)  
P.O. Box 96190, 2509 AD The Hague  
Tel. (070) 814911 ext. 141/142

RN: ISN 6157  
LO: 321.4 89 MA

## **THE PLACE OF THE VENTILATED IMPROVED LATRINE IN PUBLIC HEALTH AND PRIMARY HEALTH CARE**

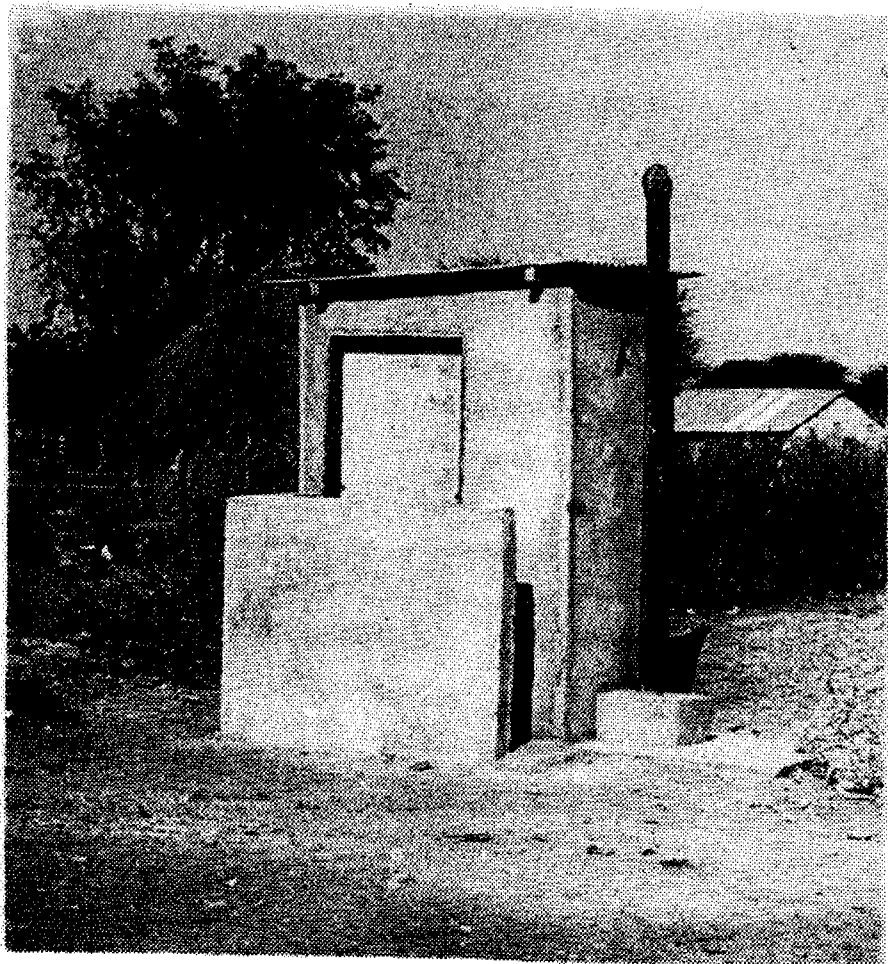
A major cause of water and sanitation related diseases such as diarrhoea, and bilharzia are due to contact with human excreta or contamination of water with urine and excreta. In order to stop the occurrence and spread of these diseases, there should be a safe way of disposing human excreta and urine.

The VIP latrine offers such a way.

The VIP latrine has the following advantages.

1. It does not smell because it has a vent pipe to take away the odour.
2. No flies or mosquitoes can enter or leave because of the fly screen at the top of the vent pipe.
3. The pit doesn't fall in or collapse because it is supported or lined with bricks.
4. It is hygienic and easy to clean because it has a concrete slab and a smooth seat unit.
5. When flooding occurs water doesn't enter the pit because the floor level is raised above the ground level.

The VIP latrine will help you to improve the health of your family and the community find out how you can build the latrines by reading this hand -book.



## **II) WHERE TO GET ASSISTANCE FOR BUILDING A VIP LATRINE IN YOUR VILLAGE.**

The Government of Botswana and the German Development Bank (KFW) are financing a project called - "major villages latrine construction project". The objectives of the project are:-

- To assist you in providing safe and hygienic latrines for your use.
- To help you to understand the links between poor sanitation and the spread of diseases through health education.

The essential element of the project is the integrated approach. This means that this is your project and you have to participate and work with Government Departments such as the Ministry of Local Government and Lands, the Ministry of Health and Central District Council to make it successful.

- Assistance in building a VIP latrine in this project can be obtained either office of :

The Public Health Department - Central District Council -  
Private Bag 001 - Serowe.

2. The public health department and ward heads in each of the villages:  
Serowe, Palapye, Tonota/Shashe and Mahalapye.

### **III) WHAT ASSISTANCE DOES THE CENTRAL DISTRICT COUNCIL OFFER?**

The Central District Council will provide the following:-

- **Technical assistance - the services of the project coordinators, are made available to provide technical advice in building a substructure which consists of lining and slabs.**
  
- **Material for the construction of the substructure.**
  
- **A contractor to line the pit and also to place the slabs.**
  
- **A compressor and jack hammer to break hard rock that may be found during excavation.**
  
- **A ventpipe and the flyscreen will be fitted.**
  
- **A pedestal seat with well fitting cover will be fitted.**
  
- **digging tools which can be borrowed and returned back to the Council after use.**

#### **IV) WHAT YOU SHOULD DO TO GET A VENTILATED IMPROVED PIT LATRINE.**

If you are living in Serowe, Palapye Tonota/Shashe of Mahalapye, you should do the following in order to get assistance in building a V.I.P. latrine:-

- 1) Attend kgotla meetings and workshops organised by the project coordinators.
- 2) Obtain registration forms available from your wardheads, Family Welfare Educators or Project Coordinators.
- 3) Fill in the forms and register by paying P30.00 to the Central District Council - Revenue Office in your village.
- 4) Excavate your pit according to the dimensions shown in the illustration No.1
- 5) On completion of excavation, please inform the Project Coordinator for lining of the pit and placement of slabs (according to illustration No. 2) by Council.
- 6) Build your superstructure preferably according to illustration number 4.
- 7) Please use and maintain the Ventilated Improved Pit latrine which you have now completed.

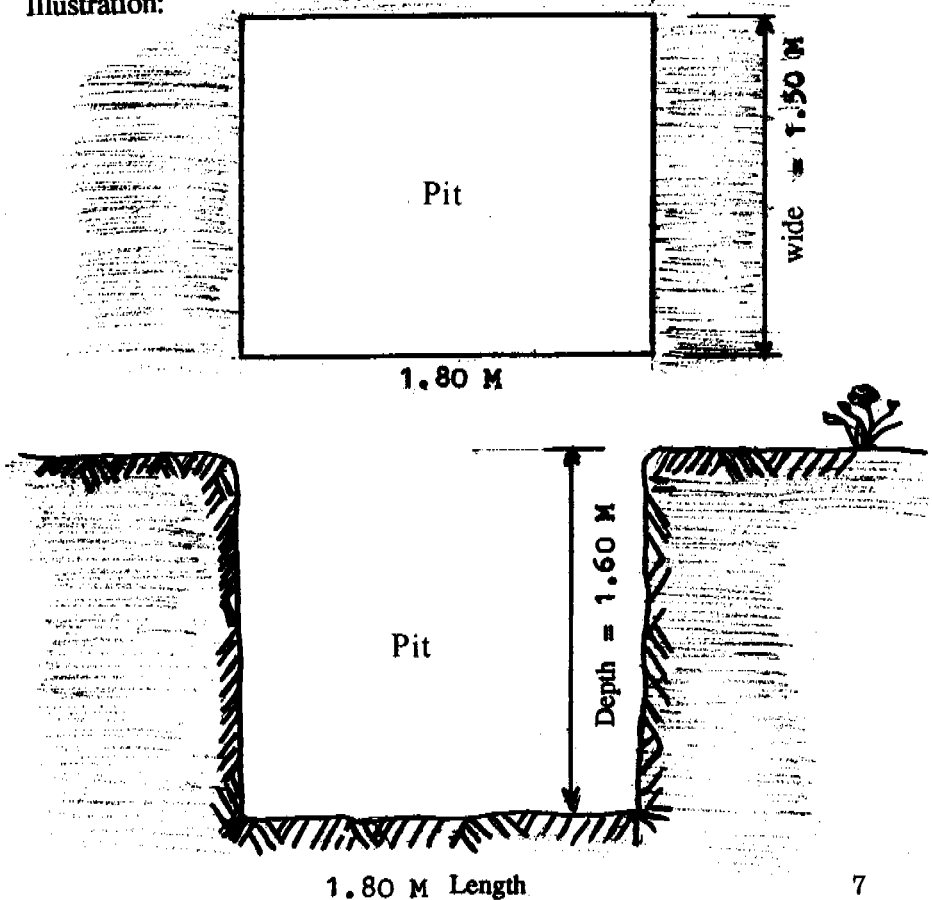
## V) METHOD OF CONSTRUCTING A VENTILATED IMPROVED PIT LATRINE.

- 1) Selection of site: Select the site for your V.I.P. latrine in consultation with the project coordinator.
- 2) Requirement: A latrine should be located at least 20 metres from houses, rivers or streams.
- 3) Excavation: Excavate the pit according to the following dimensions:

Length of pit	= 1.8 metres
Width of pit	= 1.5 metres
Depth of pit	= 1.6 metres

**Note:** Compressor will be made available if ordinary excavation is not possible due to hard rock.

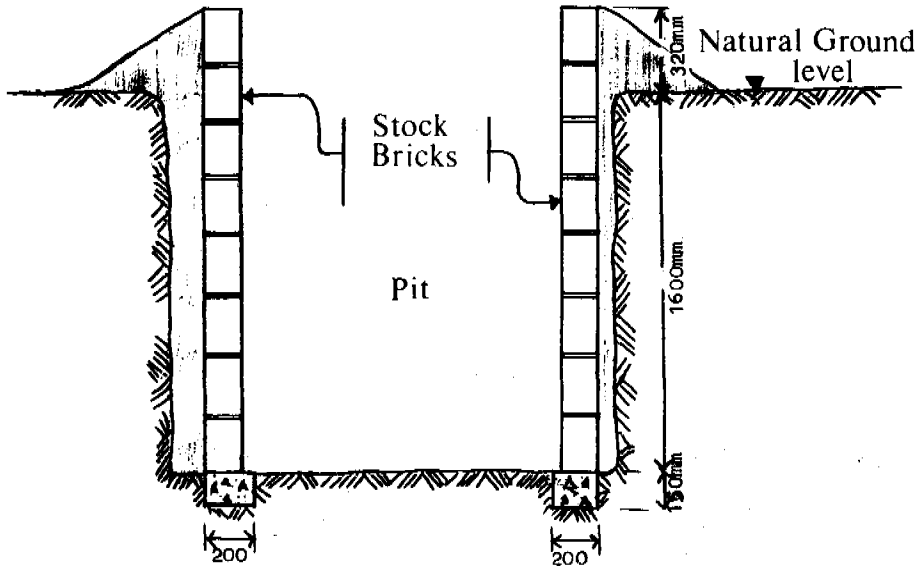
Illustration:





#### 4) CONSTRUCTION OF SUBSTRUCTURE

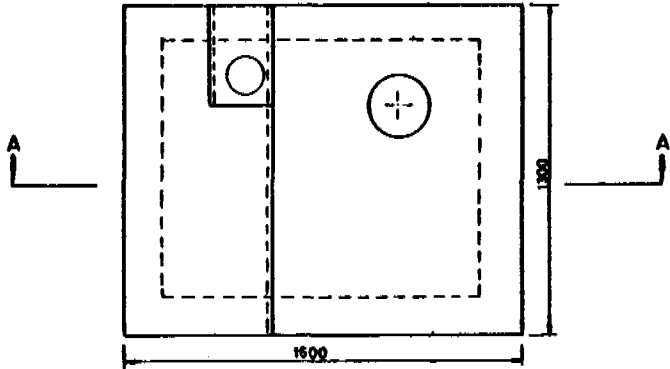
The lining of the excavated pit will be done by the contractor appointed by the Central District Council. Cement blocks used for lining be 450 x 150 x 230 mm. Back filling and proper compaction of the excavated pit will be done by the same contractor as show in the diagram.



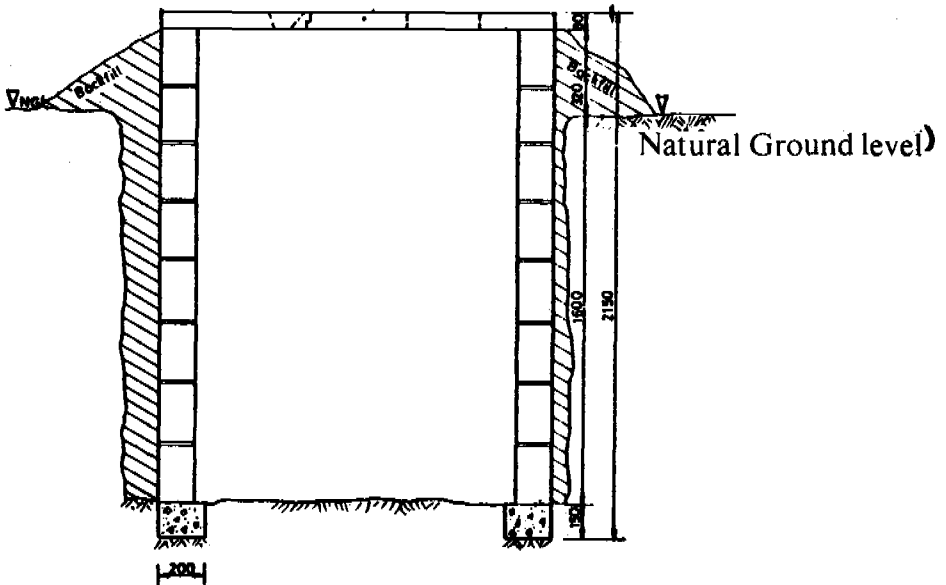
## 5) FITTING OF SLABS

Three slabs will be fitted on top of the cement lined by the contractor free of charge.

Illustration: 3:



PLAN



SECTION A-A

**6) The superstructure is constructed by you using any material. It is advisable to construct the superstructure as follows:-**

**a) Superstructure walls to be built with 450 x 115 x 230 mm cement block or other suitable materials such as mud brick, brint brids, or corrugate iron sheets.**

**b) Cement mortar cement: sand 1.6 mixture may be used to bond the bricks.**

**c) The door will be:**

**662 mm wide**

**1880 mm high**

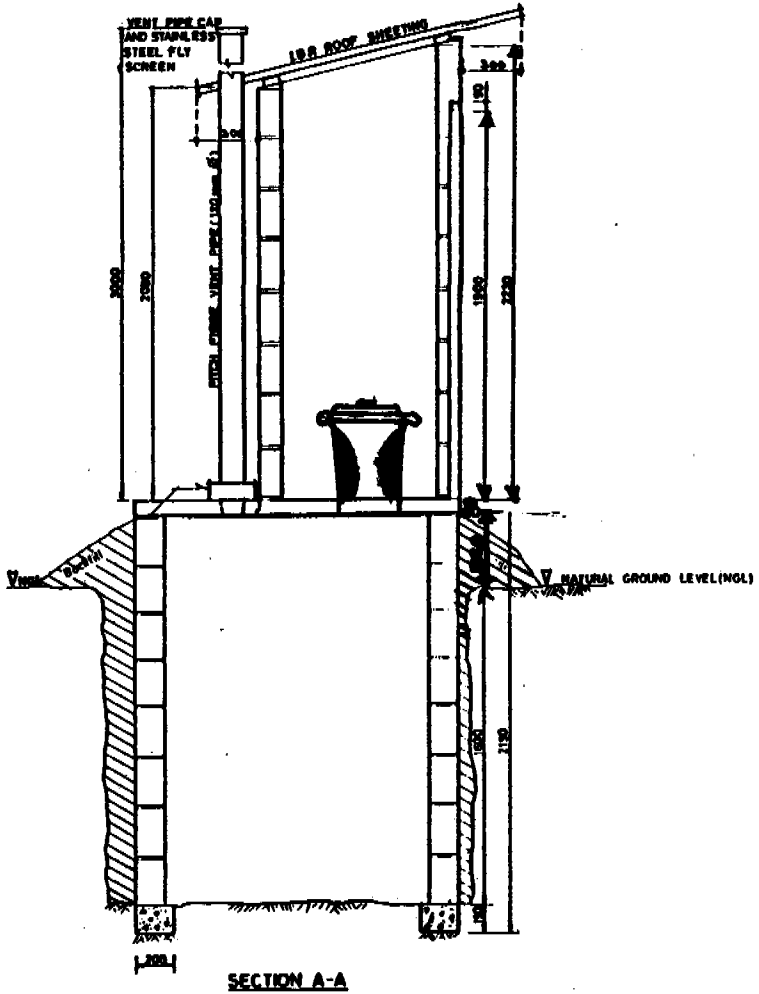
**20 mm thick**

**d) The roof sheeting may be any local material or galvanised sheets.**

**e) Ventpipe issued by the Central District Council will be secured to the blockwork with wire.**

f) A brickwork seat base 400 mm high has to be constructed around the hole. A plastic seat issued by the CDC will be installed on the base. The brick work will be plastered.

Illustration:4



**VI) KEY FACTS ABOUT THE USE AND MAINTENANCE OF VENTILATED IMPROVED PIT LATRINE.**

- Keep the latrine and surrounding clean daily.
- Cover the latrine seat after use.
- Keep the door closed.
- Do not deposit refuse, and empty cans in the pit.
- Do not pour water into the pit.
- Wash your hands with soap and water after using the latrine.
- Children must be trained to use the latrine.
- Mothers must see that the excreta of infants and small children are deposited in the latrine.
- Check the fly screen on the ventpipe regularly. If it is damaged or torn, it must be replaced immediately.
- Check the ventpipe regularly for blockage.
- If the floor slab is cracked or broken it must be replaced.
- Ensure that the entire family uses the latrine.

**TOWARDS ACHIEVING HEALTH FOR ALL BY THE  
YEAR 2000**